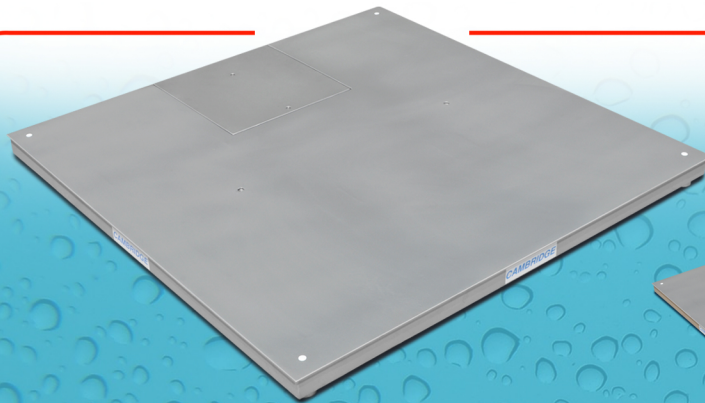


C A M B R I D G E

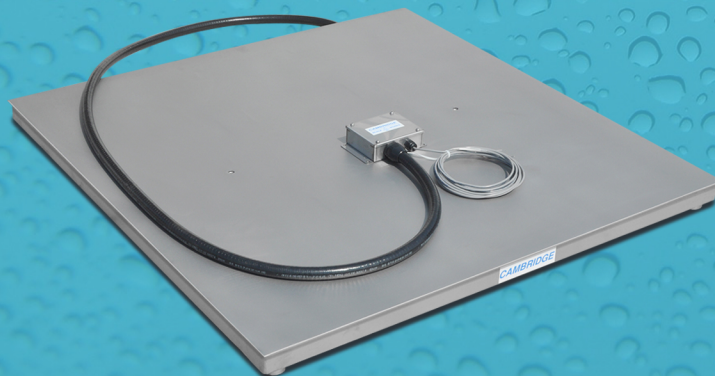
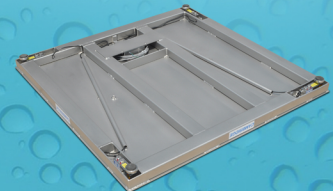
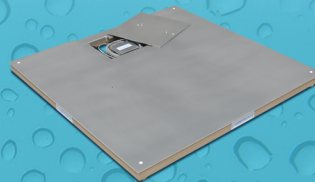
MODEL SS660 SERIES STAINLESS STEEL LOW PROFILE FLOOR SCALES

Applications:

- Pharmaceutical
- Harsh Environment
- Food Processing
- Washdown Environment
- Batching/Filling
- General Purpose Weighing



Model SS660-OB features an ON-BOARD junction box



Model SS660-R features a REMOTE junction box



Optional Cambridge
Model SSCSW-20AT
indicator.

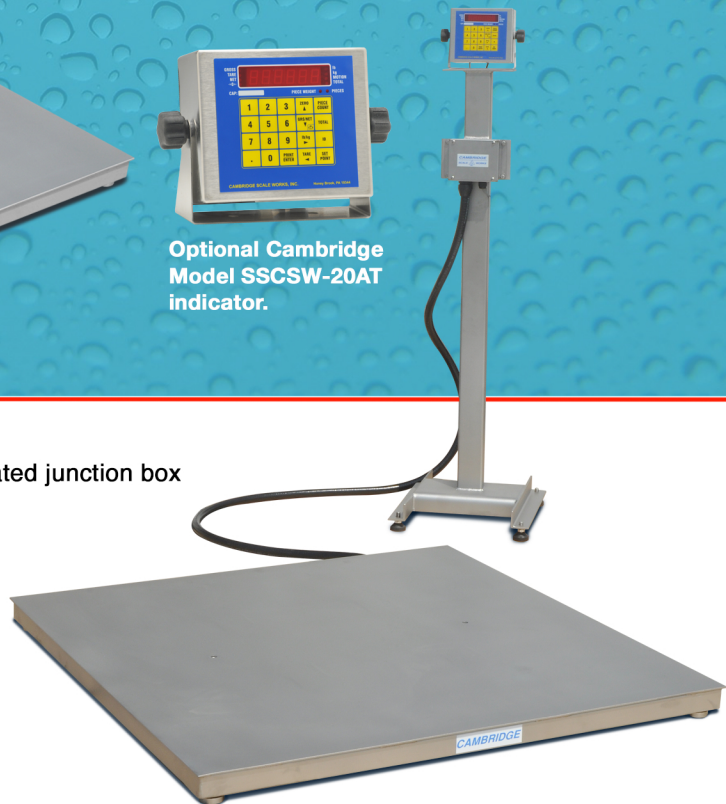
Model SS660-OB Features:

- “ON-BOARD” stainless steel NEMA IV, water seal rated junction box
- Smooth plate stainless steel Type 304
- Stainless steel Type 304 construction
- Capped and sealed stainless steel structural tubing
- Stainless steel IP67 waterseal rated load cells
- 20 ft. shielded signal cable
- Eye bolt lift holes for easy set-up
- 100% end loading protection
- 200% overload & shock load protection
- Easy access leveling

Model SS660-R Features:

All of the above except with-

- “REMOTE” stainless steel NEMA IV, water seal rated junction box and 10' Sealite flex conduit



Model SS660-R shown with optional stainless steel free standing
indicator column and Cambridge Model SSCSW-20AT indicator.

Approvals:



COC# 96-157A1



Members:

- THE NATIONAL CONFERENCE ON WEIGHTS AND MEASURES

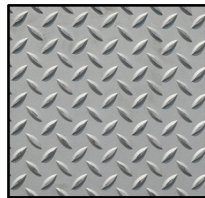
C A M B R I D G E

MODEL SS660 SERIES STAINLESS STEEL LOW PROFILE FLOOR SCALES

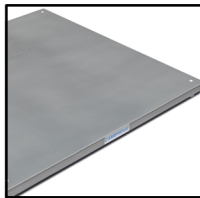
Model SS660 Specifications (Standard Sizes)

SIZE	CAPACITY	SHIP WEIGHT	SIZE	CAPACITY	SHIP WEIGHT
24" x 24" x 3"	1,000 lb.	95 lb.	48" x 60" x 3"	5,000 lb. *	385 lb.
	2,500 lb.	95 lb.		10,000 lb. *	490 lb.
30" x 30" x 3"	1,000 lb.	125 lb.	48" x 72" x 3"	5,000 lb. *	465 lb.
	2,500 lb.	125 lb.		10,000 lb. *	585 lb.
36" x 36" x 3"	1,000 lb.	180 lb.	60" x 60" x 3"	5,000 lb. *	485 lb.
	2,500 lb.	180 lb.		10,000 lb. *	600 lb.
	5,000 lb.	180 lb.	60" x 60" x 4"	20,000 lb. *	855 lb.
48" x 48" x 3"	1,000 lb.	250 lb.	60" x 84" x 4"	10,000 lb. *	1,140 lb.
	2,500 lb.	250 lb.		20,000 lb. *	1,380 lb.
	5,000 lb. *	250 lb.	* NTEP Approved Custom sizes available. Consult factory		
	10,000 lb. *	375 lb.			

Model SS660 Stainless Steel Options:



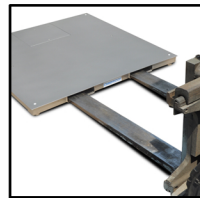
Diamond deck plate



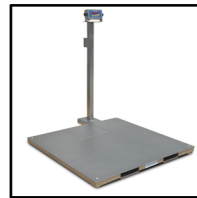
Type 316 construction



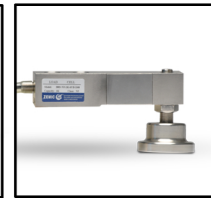
Hermetically sealed
and/or "FM" approved
load cells



Fork lift skid package

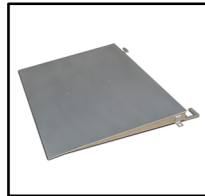


48" Indicator column
(attached)

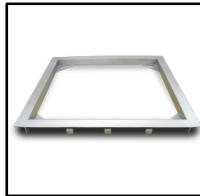


Captive ball
leveling feet

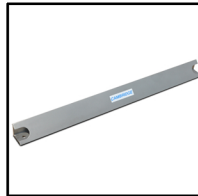
Model SS660 Stainless Steel Accessories:



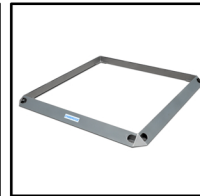
Ramp



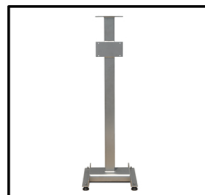
Pit form



Bumper guard



Bumper guard surround



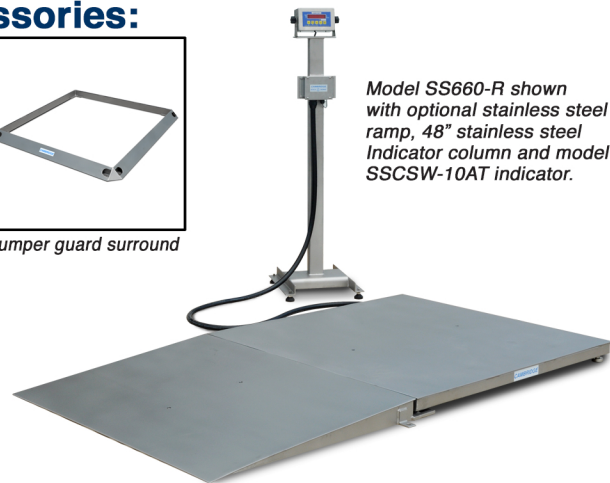
48" Indicator column
(Free standing)



Lag down bracket
(sold individually)



Portability cart



Model SS660-R shown
with optional stainless steel
ramp, 48" stainless steel
Indicator column and model
SSCSW-10AT indicator.

Distributed By:

Cambridge Scale Works, Inc.
will warrant this product for
one full year against defects
in material and/or workmanship.



Cambridge Scale Works, Inc. • P. O. Box 670 • Honey Brook, PA 19344
(800) 292-7640 • www.cambridgescale.com

© Cambridge Scale Works, Inc. 6/2014